

The Wyandotte Repeater

Past, Present and Future

By Stan Briggs, K8SB

Trustee of WY8DOT

The Wyandotte Repeater

Past, Present and Future

By Stan Briggs, K8SB

Trustee of WY8DOT

Presented to the Motor City Radio Club October 7, 2011



Detroit area 2 Meter FM Before Repeaters

- Early 1960s

Two meter FM employed modified commercial two way service radios



Detroit area 2 Meter FM Before Repeaters

- Early 1960s

Two meter FM employed modified commercial two way service radios

FCC Split commercial channels making a lot of inexpensive surplus available



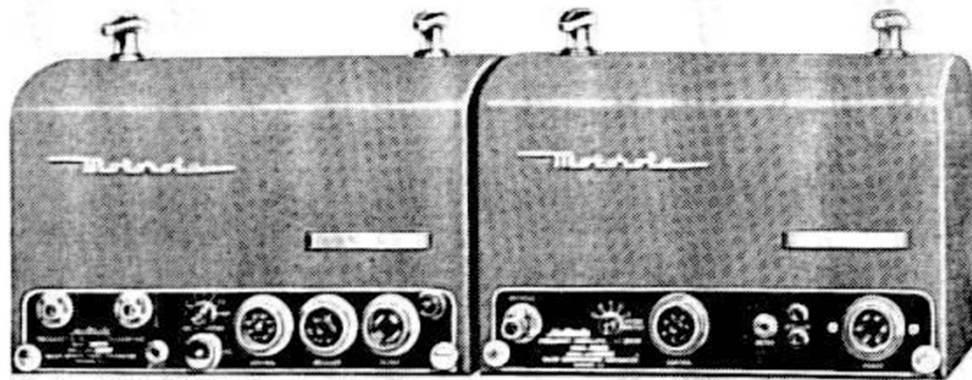
Detroit area 2 Meter FM Before Repeaters

- Early 1960s

Two meter FM employed modified commercial two way service radios

FCC Split commercial channels making a lot of inexpensive surplus available

A popular system was called the Two case Motorola.



"Deluxe" Line FM Equipment



Motorola P-8022 Control Head, Circa 1945. Used on all early FMTR Equipment through 1950.

Motorola FMTR-30D Mobile Radio Set, FM, Circa 1945



Motorola FMTR-30D Mobile Radio Set, FM, Circa 1945

15V Receiver

30D Transmitter





Detroit area 2 Meter FM Before Repeaters

- Early 1960s

Two meter FM employed modified commercial two way service radios

FCC Split commercial channels making a lot of inexpensive surplus available

A popular system was called the Two case Motorola

These were all tube sets. No Transistors!



Detroit area 2 Meter FM Before Repeaters

- Early 1960s

In the Detroit area there were two frequencies in use:



Detroit area 2 Meter FM Before Repeaters

- Early 1960s

In the Detroit area there were two frequencies in use:

146.940 MHz and 147.300 MHz



Detroit area 2 Meter FM Before Repeaters

- Early 1960s

In the Detroit area there were two frequencies in use:

146.940 MHz and 147.300 MHz

Novice and Technicians could use 145.00 MHz to 147.00 MHz only.



Detroit area 2 Meter FM Before Repeaters

- Early 1960s

In the Detroit area there were two frequencies in use:

146.940 MHz and 147.300 MHz

Novice and Technicians could use 145.00 MHz to 147.00 MHz only.

There were 5 FCC engineers in the Detroit office all hams. They were all on nightly on 147.3 Mhz



Detroit area 2 Meter FM Before Repeaters

- Early 1960s

Most all stations used high vertical ground planes or vertical multi-element beams.



Detroit area 2 Meter FM Before Repeaters

- Early 1960s

Most all stations used high vertical ground planes or vertical multi-element beams.

Communications from base to mobiles over distances of 30 or 40 miles was common.



Detroit area 2 Meter FM Before Repeaters

- Early 1960s

Most all stations used high vertical ground planes or vertical multi-element beams.

Communications from base to mobiles over distances of 30 or 40 miles was common.

Mobile to mobile was rarely greater than 10 miles.



Detroit area 2 Meter FM Before Repeaters

- Early 1960s

Most all stations used high vertical ground planes or vertical multi-element beams.

Communications from base to mobiles over distances of 30 or 40 miles was common.

Mobile to mobile was rarely greater than 10 miles.

There were very few “Handy Talkies” in use!



Motorola FHTRU-1DL High Band FM "Handie Talkie" Circa 1949



Detroit area 2 Meter FM Before Repeaters

- Early 1960s

Marion Stoner, W8VWY, was a big promoter of two meter FM

Detroit area 2 Meter FM Before Repeaters

- Early 1960s

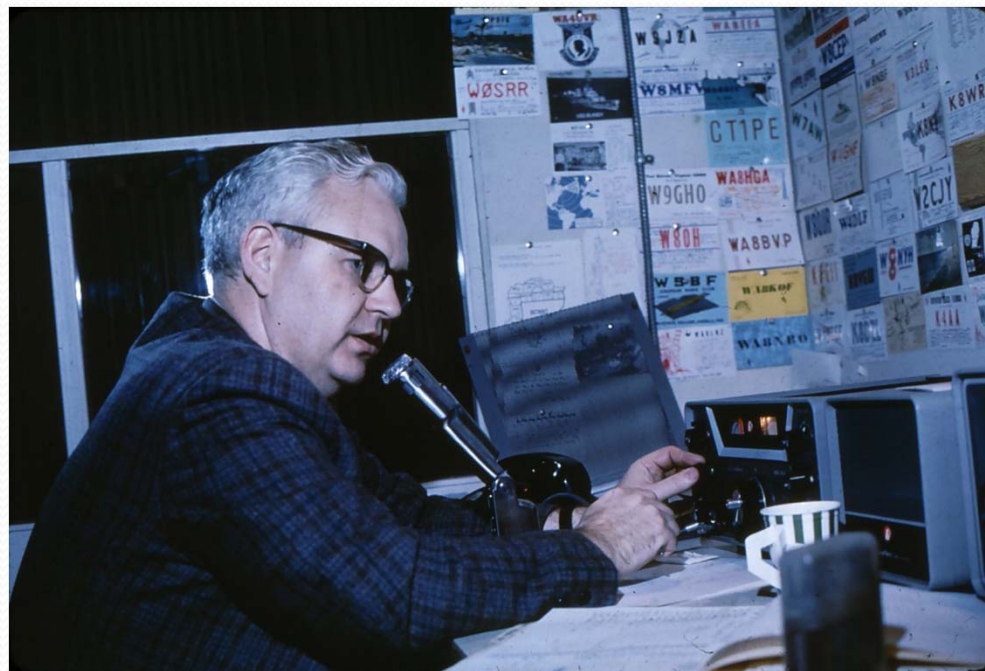
Marion Stoner, W8VWY, was a big promoter of two meter FM



Detroit area 2 Meter FM Before Repeaters

- Early 1960s

Marion Stoner, W8VWY, was a big promoter of two meter FM





Detroit area 2 Meter FM Before Repeaters

- Early 1960s

Marion Stoner, W8VWY, was a big promoter of two meter FM

He published for quite a few years a monthly list of all stations active on 146.940 MHz. in Southeastern Michigan.

W S P P G
Geo. SCHMALZEL

SOUTHEASTERN MICHIGAN

List No. 22

Stations on 146.94 Mc., Wide-band FM, as of October 1, 1964

W8AAF/Mobile	Malvin Gregory	3180 Cape Drive	Owosso
K8ACN *	Denis Seusa	4373 Sunnymead Ave.	Flint
K8AIZ	George J. Trombly	359 Chalfente	Grosse Pointe Farms
W8AJT/Mobile	Webb K. Slusher	Evans Lake	Tipton
W8ANI	Gary C. Chatters	610 Webb Street	Jackson
K8AOB	Homer Blumerich	6403 W. Pierson Road	Flushing
K8AQA	Robert W. Merdler	916 S. Jefferson	Saginaw
K8AQC *	Ronald J. Kittel	17036 Russell Avenue	Allen Park
W8BCI *	Daniel G. Harger	537 Woodrow Avenue	Lansing
K8BDR/Mobile	Robert Snyder	324 S. Main Street	Perry
W8BEZ/Mobile	Albert W. Boehlein	29146 Sheridan	Garden City
K8BJM/Mobile	Weston D. Phare	110 Tuxedo	Highland Park
W8BJZ * #	Charles O. Russman	1839 Warwick Street	Lincoln Park
W8BNZ *	Edward Barko	31730 MacKenzie Dr.	Garden City
K8BOD	Donald G. Rusky	5534 Steadman	Dearborn
W8BERG/Mobile	Lawrence Toney	1299 Catalpa Street	Rochester
W8BYB *	Roderick Buszard	16520 Pollyanna Dr.	Livonia
W8BZS/Mobile	Albert Scrivener	433 East Main Street	Owosso
W8CAP	Paul J. Wesch	1117 N. Ball Street	Owosso
W8CER	Robert Gauss	1286 Floyd Avenue	Jackson
K8CFX/Mobile	Odell Nelson	17141 Lampkin Street	Detroit
W8CIG	Douglas Taylor	7411 Cochise Drive	Wayne
W8CLL	Edward Atems	18714 Teppert Avenue	Detroit
W8CQB	John "Jack" Bauer	Colembiere College	Clarkston
W8CRY *	Kenneth Frost	1527 Lapeer Road, S.	Lake Orion
W8CES	Paul Kollar	29317 Bonnie Drive	Warren
W8CZN *	Glen Webb	3224 W. Main Road	Owosso
W8DIO	Larry Haut	653 E. Philadelphia Blvd.	Flint
K8DKN * #	Dominic Palazzola	13700 Elgin	Oak Park
W8DRG *	Karl H. Siegmund	5321 Bloomfield Dr.	Midland
W8DTV *	David Marshall	6330 Artesian Street	Detroit
W8DVB	Thomas Mc Evey	3919 Alston Drive	Jackson
K8DWJ	Arnold W. Fench	661 Cleophus Street	Lincoln Park
K8EGJ	James Eisenhauer	2130 Clover Ln.	Saginaw
W8EIM/Mobile	George Hoffman	135 Newman Road	Lake Orion
W8EJD	Lester Guiles	6469 West Potter Road	Flushing
W8EWF *	George J. Poland	32319 Rosslyn Street	Garden City
W8FXM/Mobile	Charles E. Umholtz	8518 Middlebelt Road	Romulus
W8FZ	Charles Loomis, Jr.	1303 Adams Street	Saginaw
W8FZB *	John Farrah	3610 Orion Road	Lake Orion
W8GLF	Walter Wassman	14050 Farmington Road	Livonia
W8GRI	James Stutesman	519 Elm Street	Saginaw
K8GTC *	Billie R. Marler	34257 Birchwood	Wayne
W8GWB	David P. Fabian	24605 Culver Street	Saint Clair Shores
W8HBZ	Malcolm G. O'Dell	1404 N. Fayette	Saginaw
K8HGA	Clair S. Parker	3001 E. Ashman Street	Midland
W8HKL	Newell Saigeon	611 Nightingale	Dearborn
W8HYU	David M. Zens	426 Napoleon Road	Michigan Center
W8IAP	Neil E. Sheldon	1033 N. Water Street	Owosso
W8ICN	Louis Urban	8775 East Road	Burt
K8IGW	Neil E. Dorfman	14530 Vernon	Oak Park
K8IKZ/Mobile	Clifford Nazelli	8490 Patton	Detroit
W8IMT	Donald D. Rice	3244 Amelia Avenue	Flushing

This October 1, 1964
list had 144 call signs
listed on it.



Detroit area 2 Meter FM Before Repeaters

- Early 1960s

Marion Stoner, W8VWY, was a big promoter of two meter FM

He published for quite a few years a monthly list of all stations active on 146.940 MHz.

.94 was the main stay of local amateur radio communications.



The Beginnings of Detroit Area Repeaters

- Late 1960

The first two major repeaters in the Detroit area:



The Beginnings of Detroit Area Repeaters

- Late 1960

The first two major repeaters in the Detroit area:

146.46 Input 146.64 Output D.A.R T.



The Beginnings of Detroit Area Repeaters

- Late 1960

The first two major repeaters in the Detroit area:

146.46 Input 146.64 Output D.A.R T.

146.34 Input 146.76 Output Great Lakes



The Beginnings of Detroit Area Repeaters

- Late 1960

The first two major repeaters in the Detroit area:

146.46 Input 146.64 Output D.A.R T.

146.34 Input 146.76 Output Great Lakes

All Radios were crystal controlled



The Beginnings of Detroit Area Repeaters

- Late 1960

The first two major repeaters in the Detroit area:

146.46 Input 146.64 Output D.A.R T.

146.34 Input 146.76 Output Great Lakes

All Radios were crystal controlled

The introduction of the Regency HR-2

The Beginnings of Detroit Area Repeaters

- Late 1960





The Beginnings of Detroit Area Repeaters

- Late 1960

The first two major repeaters in the Detroit area:

146.**04** Input 146.64 Output D.A.R T.

146.**16** Input 146.76 Output Great Lakes

All Radios were crystal controlled

The introduction of the Regency HR-2

Along came the Standard Split: 600 KHz



The Beginnings of Detroit Area Repeaters

- 1974 The “Wyandotte Repeater” was coordinated to use 147.840 MHz Input 147.240 MHz by the Michigan Area Repeater Council.



The Beginnings of Detroit Area Repeaters

- 1974 The “Wyandotte Repeater” was coordinated to use 147.840 MHz Input 147.240 MHz by the Michigan Area Repeater Council.
- The repeater came on the air using the call sign WR8AFV.



The Beginnings of Detroit Area Repeaters

- 1974 The “Wyandotte Repeater” was coordinated to use 147.840 MHz Input 147.240 MHz by the Michigan Area Repeater Council.
- The repeater came on the air using the call sign WR8AFV.
- The system was a “Split Site”



The Beginnings of Detroit Area Repeaters

- 1974 The “Wyandotte Repeater” was coordinated to use 147.840 MHz Input 147.240 MHz by the Michigan Area Repeater Council.
- The repeater came on the air using the call sign WR8AFV.
- The system was a “Split Site”
 - The receiver was at W8SSO’s QTH in Southgate.



The Beginnings of Detroit Area Repeaters

- 1974 The “Wyandotte Repeater” was coordinated to use 147.840 MHz Input 147.240 MHz by the Michigan Area Repeater Council.
- The repeater came on the air using the call sign WR8AFV.
- The system was a “Split Site”
 - The receiver was at W8SSO’s QTH in Southgate.
 - The transmitter was at WB8DRT’s QTH in Wyandotte.



The Beginnings of Detroit Area Repeaters

- 1974 The “Wyandotte Repeater” was coordinated to use 147.840 MHz Input 147.240 MHz by the Michigan Area Repeater Council.
- The repeater came on the air using the call sign WR8AFV.
- The system was a “Split Site”
 - The receiver was at W8SSO’s QTH in Southgate.
 - The transmitter was at WB8DRT’s QTH in Wyandotte.
 - They used a leased telephone line between the locations.



The Beginnings of Detroit Area Repeaters

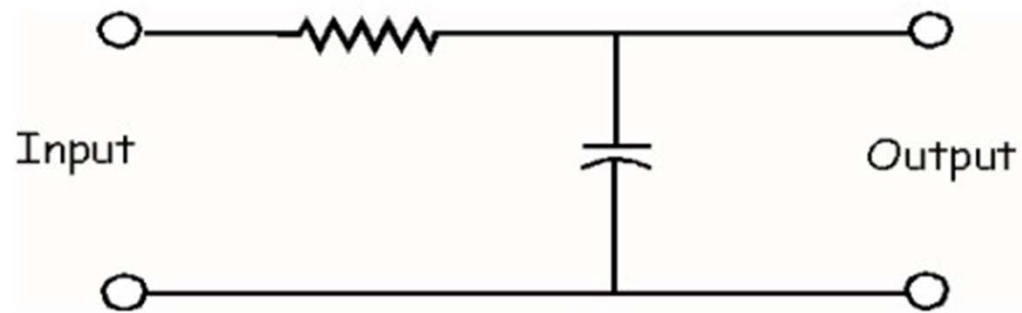
- Split site operation

A long twisted pair phone line looks like:

The Beginnings of Detroit Area Repeaters

- Split site operation

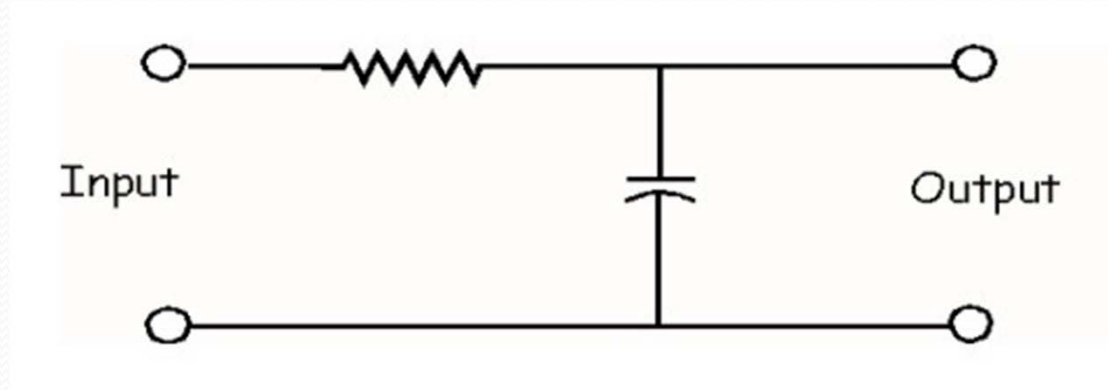
A long twisted pair phone line looks like:



The Beginnings of Detroit Area Repeaters

- Split site operation

A long twisted pair phone line looks like:

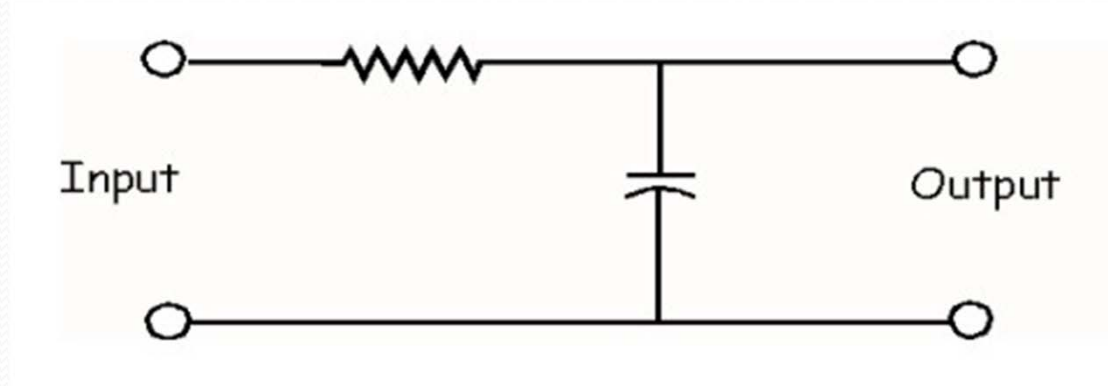


A Low Pass Filter.

The Beginnings of Detroit Area Repeaters

- Split site operation

A long twisted pair phone line looks like:

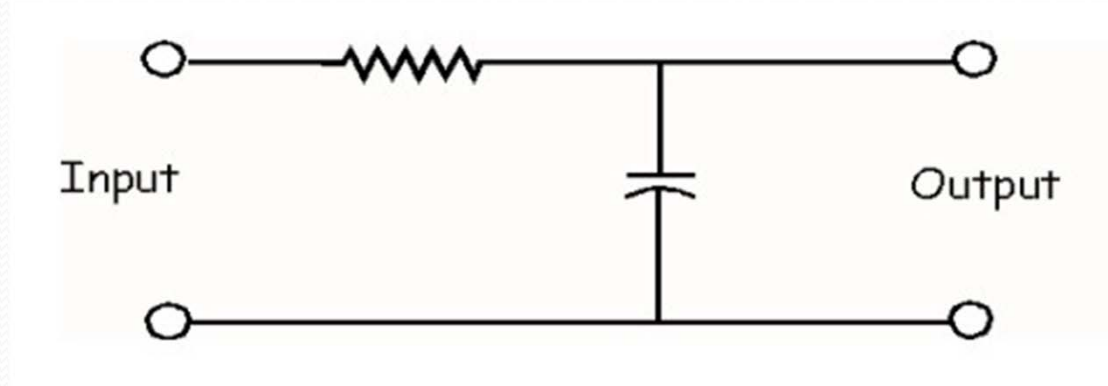


A Low Pass Filter. It sounded like talking in a rain barrel!

The Beginnings of Detroit Area Repeaters

- Split site operation

A long twisted pair phone line looks like:



A Low Pass Filter. It sounded like talking in a rain barrel!
I used my experience while in college working for WKLZ
to equalize the line.



The Beginnings of Detroit Area Repeaters

- c 1976 Single Site Repeater

W8SSO constructed a new repeater using VHF Engineering Kits:



The Beginnings of Detroit Area Repeaters

- c 1976 Single Site Repeater

W8SSO constructed a new repeater using VHF
Engineering Kits:

Receiver



The Beginnings of Detroit Area Repeaters

- c 1976 Single Site Repeater

W8SSO constructed a new repeater using VHF
Engineering Kits:

Receiver

Transmitter



The Beginnings of Detroit Area Repeaters

- c 1976 Single Site Repeater

W8SSO constructed a new repeater using VHF
Engineering Kits:

Receiver

Transmitter

COR/ID Board



The Beginnings of Detroit Area Repeaters

- c 1976 Single Site Repeater

W8SSO constructed a new repeater using VHF
Engineering Kits:

Receiver

Transmitter

COR/ID Board

12 volt regulated powersupply



The Beginnings of Detroit Area Repeaters

- c 1976 Single Site Repeater
W8SSO constructed a new repeater.
It used a new Sinclair 4 can Duplexer.



The Beginnings of Detroit Area Repeaters

- c 1976 Single Site Repeater
W8SSO constructed a new repeater.
It used a new Sinclair 4 can Duplexer.
On the air from W8SSO's QTH as WR8AIR



The Beginnings of Detroit Area Repeaters

- c 1976 Single Site Repeater

W8SSO constructed a new repeater.

It used a new Sinclair 4 can Duplexer.

On the air from W8SSO's QTH as WR8AIR

For a while at the BASF South Works Power House



The Beginnings of Detroit Area Repeaters

- c 1976 Single Site Repeater

W8SSO constructed a new repeater.

It used a new Sinclair 4 can Duplexer.

On the air from W8SSO's QTH as WR8AIR

For a while at the BASF South Works Power House

Back at W8SSO's QTH



The Beginnings of Detroit Area Repeaters

- c 1976 Single Site Repeater

W8SSO constructed a new repeater.

It used a new Sinclair 4 can Duplexer.

On the air from W8SSO's QTH as WR8AIR

For a while at the BASF South Works Power House

Back at W8SSO's QTH

In 1979 W8SSO announced that the repeater was for sale



The Wyandotte Repeater 1979 - 2011

- New Ownership

A group formed to purchase the repeater



The Wyandotte Repeater 1979 - 2011

- New Ownership

A group formed to purchase the repeater
K8SB



The Wyandotte Repeater 1979 - 2011

- New Ownership

A group formed to purchase the repeater

K8SB

WB8AFO



The Wyandotte Repeater 1979 - 2011

- New Ownership

A group formed to purchase the repeater

K8SB

WB8AFO

WD8KZO



The Wyandotte Repeater 1979 - 2011

- New Ownership

A group formed to purchase the repeater

K8SB

WB8AFO

WD8KZO

WD8KZX



The Wyandotte Repeater 1979 - 2011

- New Ownership

A group formed to purchase the repeater

K8SB

WB8AFO

WD8KZO

WD8KZX

WA8FRE



The Wyandotte Repeater 1979 - 2011

- New Ownership

A group formed to purchase the repeater

K8SB

WB8AFO

WD8KZO

WD8KZX

WA8FRE

WD8CSA



The Wyandotte Repeater 1979 - 2011

- New Ownership

Operated under K8SB's Repeater Call sign WR8AOX



The Wyandotte Repeater 1979 - 2011

- New Ownership

Operated under K8SB's Repeater Call sign WR8AOX
Located at WB8CWI's QTH in Trenton while a
permanent location was found.



The Wyandotte Repeater 1979 - 2011

- New Ownership

Operated under K8SB's Repeater Call sign WR8AOX
Located at WB8CWI's QTH in Trenton while a
permanent location was found.

In December 1979 an Agreement was signed to allow
the placement of the repeater at the Riverview Coop
Apartments



The Wyandotte Repeater 1979 - 2011

- New Ownership

Operated under K8SB's Repeater Call sign WR8AOX
Located at WB8CWI's QTH in Trenton while a permanent location was found.

In December 1979 an Agreement was signed to allow the placement of the repeater at the Riverview Coop Apartments.

The HAAT was 150 feet and 50 watts ERP from a colinear antenna mounted on the South East corner of the elevator penthouse. (Only service at the time)



The Wyandotte Repeater 1979 - 2011

- New Ownership

FCC Rules changed to allow Amateur Radio Operators to hold only one call sign.



The Wyandotte Repeater 1979 - 2011

- New Ownership

FCC Rules changed to allow Amateur Radio Operators to hold only one call sign.

At the time K8SB also held W8MPD, WR8AOX, and an Auxiliary Link call sign. So a choice of which call to renew had to be made.



The Wyandotte Repeater 1979 - 2011

- New Ownership

FCC Rules changed to allow Amateur Radio Operators to hold only one call sign.

At the time K8SB also held W8MPD, WR8AOX, and an Auxiliary Link call sign. So a choice of which call to renew had to be made.

K8SB was chosen.



The Wyandotte Repeater 1979 - 2011

- Equipment Changes

In 1994 the antenna became noisy.



The Wyandotte Repeater 1979 - 2011

- Equipment Changes

In 1994 the antenna became noisy.

A db Products commercial 4 bay folded dipole antenna was purchased and installed.





The Wyandotte Repeater 1979 - 2011

- Equipment Changes

In 1994 the antenna became noisy.

A db Products commercial 4 bay folded dipole antenna was purchased and installed.

In 2002 the country became much more concerned about security. We were required to immediately move the repeater out of the elevator machine room.



The Wyandotte Repeater 1979 - 2011

- Equipment Changes

In 1994 the antenna became noisy.

A db Products commercial 4 bay folded dipole antenna was purchased and installed.

In 2002 the country became much more concerned about security. We were required to immediately move the repeater out of the elevator machine room.

A commercial two way radio communications company was hired to move the equipment one floor down and replace the hard line to the antenna.



The Wyandotte Repeater 1979 - 2011

- Equipment Changes

In 1994 the antenna became noisy.

A db Products commercial 4 bay folded dipole antenna was purchased and installed.

In 2002 the country became much more concerned about security. We were required to immediately move the repeater out of the elevator machine room.

A commercial two way radio communications company was hired to move the equipment one floor down and replace the hard line to the antenna.

Same equipment until the Spring of 2011



The Wyandotte Repeater 1979 - 2011

- Formation of The Wyandotte Amateur Radio Repeater Association in 2010

Association was chartered under the State of Michigan as a Non-Profit corporation



The Wyandotte Repeater 1979 - 2011

- Formation of The Wyandotte Amateur Radio Repeater Association in 2010

Association was chartered under the State of Michigan as a Non-Profit corporation

Obtained the Call Sign WY8DOT



The Wyandotte Repeater 1979 - 2011

- Formation of The Wyandotte Amateur Radio Repeater Association in 2010

Association was chartered under the State of Michigan as a Non-Profit corporation

Obtained the Call Sign WY8DOT

Became an ARRL Affiliated Club

Purchased newly required Liability Insurance



The Wyandotte Repeater 1979 - 2011

- New Repeater Construction



The Wyandotte Repeater 1979 - 2011

- **New Repeater Construction**

Obtained a used Motorola MSF-5000 Repeater, a new Arcom RC-210 Controller, surplus Motorola cabinets, used Motorola UHF transceiver from Ebay and a small 12 volt DC power supply.



The Wyandotte Repeater 1979 - 2011

- **New Repeater Construction**

Obtained a used Motorola MSF-5000 Repeater, a new Arcom RC-210 Controller, surplus Motorola cabinets, used Motorola UHF transceiver from Ebay and a small 12 volt DC power supply.

Eric, K8UH and T.J. KC8LTS interfaced the RC-210 Controller with the MSF-5000 and programmed both for operation on 147.840 MHz /147.240 MHz



The Wyandotte Repeater 1979 - 2011

- New Repeater Construction

Obtained a used Motorola MSF-5000 Repeater, a new Arcom RC-210 Controller, surplus Motorola cabinets, used Motorola UHF transceiver from Ebay and a small 12 volt DC power supply.

Eric, K8UH and T.J. KC8LTS interfaced the RC-210 Controller with the MSF-5000 and programmed both for operation on 147.840 MHz /147.240 MHz

K8UH, KC8LTS and K8SB configured the UHF transceiver for control functions.



The Wyandotte Repeater 1979 - 2011

- **New Repeater Construction**

All of this work was done in T.J.s garage during the fall and winter of 2010 until T.J.'s XYL insisted on the garage space back for her car!



The Wyandotte Repeater 1979 - 2011

- **New Repeater Construction**

All of this work was done in T.J.s garage during the fall and winter of 2010 until T.J.'s XYL insisted on the garage space back for her car!

The repeater was moved to John, N8KAM's garage for more testing.

Mar 5, 2010





The Wyandotte Repeater 1979 - 2011

- **New Repeater Construction**

All of this work was done in T.J.s garage during the fall and winter of 2010 until T.J.'s XYL insisted on the garage space back for her car!

The repeater was moved to John, N8KAM's garage for more testing.

We spent quite a bit of time attempting to solve an echo problem.



The Wyandotte Repeater 1979 - 2011

- **New Repeater Construction**

All of this work was done in T.J.s garage during the fall and winter of 2010 until T.J.'s XYL insisted on the garage space back for her car!

The repeater was moved to John, N8KAM's garage for more testing.

We spent quite a bit of time attempting to solve an echo problem.

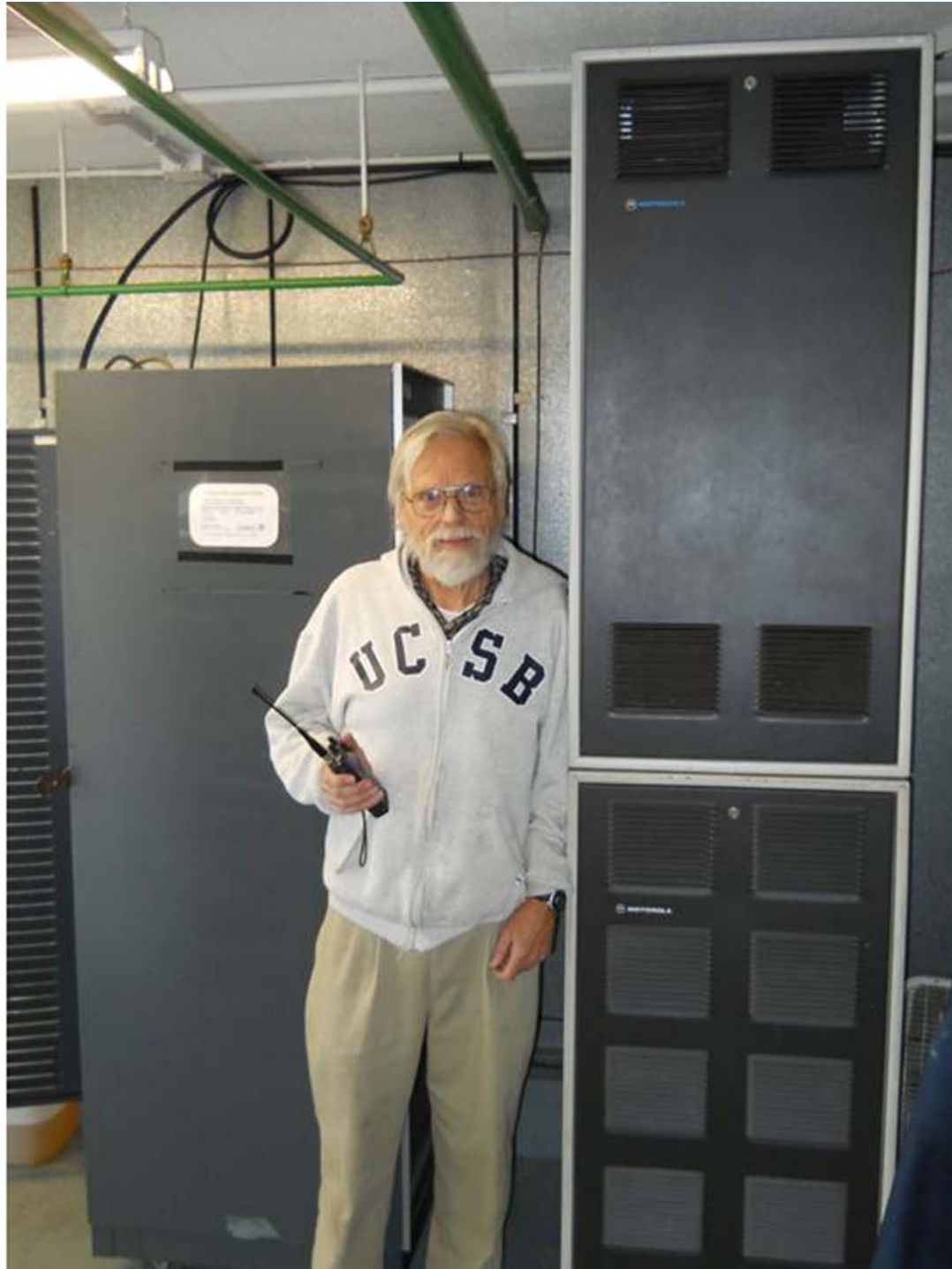
It was finally ready to move the Riverview Coop apartment site.



Mar 11, 2011



Mar 11, 2011



Mar 11, 2011



The Wyandotte Repeater 1979 - 2011

- **New Repeater Construction**

A few days after moving the equipment K8SB, KC8LTS and WA8FRD moved the duplexer from the old repeater into the new repeater.

KC8LTS retuned the duplexer.



Mar 16, 2011





WARNING
P.A. RACK
RELOCATE AS
INDICATED
POWER UNIT
SHOULD
NOT BE
REMOVED
FROM
RACK

Arcom

P11 OOS CRCS DTRM

PULSA
ELECTRONICS, INC.
BLONDER TO
LABORATORIES, INC.
MADE IN US



The Wyandotte Repeater 1979 - 2011

- New Repeater Construction

The new repeater was placed into service on March 16, 2011.



The Wyandotte Repeater 1979 - 2011

- New Repeater Construction

The new repeater was placed into service on March 16, 2011.

50 watts out of the duplexer



The Wyandotte Repeater 1979 - 2011

- New Repeater Construction

The new repeater was placed into service on March 16, 2011.

50 watts out of the duplexer

.5 db loss in hardline giving 44.6 watts into the antenna



The Wyandotte Repeater 1979 - 2011

- New Repeater Construction

The new repeater was placed into service on March 16, 2011.

50 watts out of the duplexer

.5 db loss in hardline giving 44.6 watts into the antenna

9 db gain in the major direction = 397 watts ERP



The Wyandotte Repeater 1979 - 2011

- New Repeater Construction

The new repeater was placed into service on March 16, 2011.

50 watts out of the duplexer

.5 db loss in hardline giving 44.6 watts into the antenna

9 db gain in the major direction = 397 watts ERP

6 db gain average giving 199 watts.



The Wyandotte Repeater 1979 - 2011

- New Repeater Features

The repeater transmits a 100 hz CTCSS tone for use with the tone squelch function in user's transceivers.



The Wyandotte Repeater 1979 - 2011

- New Repeater Features

The repeater transmits a 100 hz CTCSS tone for use with the tone squelch function in user's transceivers.

Squelch Burst inhibiting.



The Wyandotte Repeater 1979 - 2011

- New Repeater Features

The repeater transmits a 100 hz CTCSS tone for use with the tone squelch function in user's transceivers.

Squelch Burst inhibiting.

Courtesy tone



The Wyandotte Repeater 1979 - 2011

- New Repeater Features

The repeater transmits a 100 hz CTCSS tone for use with the tone squelch function in user's transceivers.

Squelch Burst inhibiting.

Courtesy tone

Voice ID



The Wyandotte Repeater 1979 - 2011

- New Repeater Features

The repeater transmits a 100 hz CTCSS tone for use with the tone squelch function in user's transceivers.

Squelch Burst inhibiting.

Courtesy tone

Voice ID

CW ID



The Wyandotte Repeater 1979 - 2011

- New Repeater Features

The repeater transmits a 100 hz CTCSS tone for use with the tone squelch function in user's transceivers.

Squelch Burst inhibiting.

Courtesy tone

Voice ID

CW ID

CTCSS (PL) Access



The Wyandotte Repeater 1979 - 2011

- New Repeater Features

The repeater transmits a 100 hz CTCSS tone for use with the tone squelch function in user's transceivers.

Squelch Burst inhibiting.

Courtesy tone

Voice ID

CW ID

CTCSS (PL) Access

Digital Voice Record/Playback



The Wyandotte Repeater 1979 - 2011

- Features that probably will be added in the future



The Wyandotte Repeater 1979 - 2011

- Features that may be added in the future
 - Scheduled voice announcements such as announcing the MCRC 2 meter net, Metro Grand Spring tour, Etc



The Wyandotte Repeater 1979 - 2011

- Features that may be added in the future

Scheduled voice announcements such as announcing the MCRC 2 meter net, Metro Grand Spring tour, Etc

An uninterruptable power supply



The Wyandotte Repeater 1979 - 2011

- Features that may be added in the future

Scheduled voice announcements such as announcing the MCRC 2 meter net, Metro Grand Spring tour, Etc

An uninterruptable power supply

A different Courtesy tone when PL access is enabled



The Wyandotte Repeater 1979 - 2011

- Features that may be added in the future

Scheduled voice announcements such as announcing the MCRC 2 meter net, Metro Grand Spring tour, Etc

An uninterruptable power supply

A different Courtesy tone when PL access is enabled

Remote meter reading such as equipment and outdoor temperatures, power supply voltage, etc.



WY8DOT Experimental EchoLink

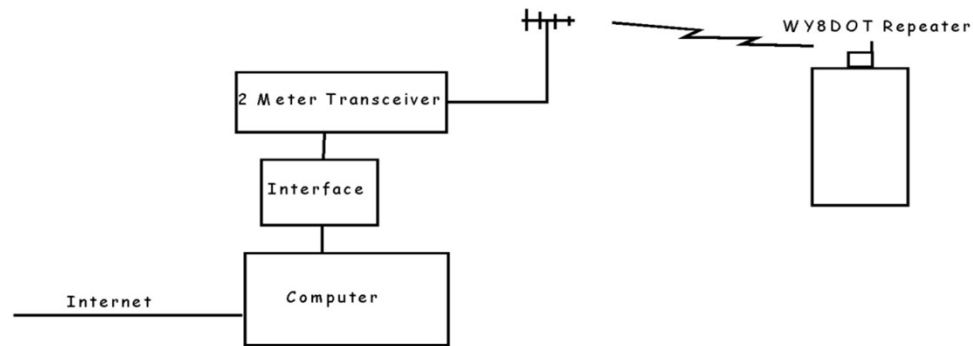


WY8DOT Experimental EchoLink

WY8DOT is experimenting with a full time EchoLink system connected to the repeater.

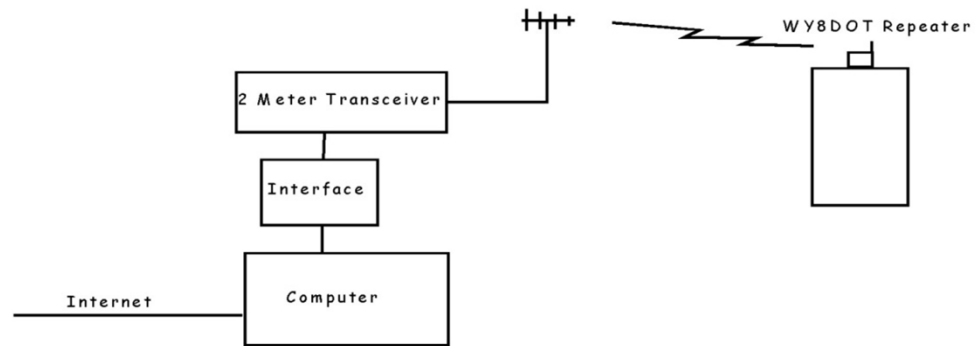
WY8DOT Experimental EchoLink

WY8DOT is experimenting with a full time EchoLink system connected to the repeater.





WY8DOT Experimental EchoLink





The Future for WY8DOT



The Future for WY8DOT





The Future for WY8DOT

Immediate Project: Debug an intermittent PL issue.



The Future for WY8DOT

Immediate Project: Debug an intermittent PL issue.
Replace the UHF antenna



The Future for WY8DOT

Immediate Project: Debug an intermittent PL issue.
Replace the UHF antenna
Keep the Wyandotte Repeater on the air for years
to come.



The Officers of the Wyandotte Amateur Repeater Association



The Officers of the Wyandotte Amateur Repeater Association

President: John N8KAM



The Officers of the Wyandotte Amateur Repeater Association

President: John N8KAM

Vice President: Eric K8UH



The Officers of the Wyandotte Amateur Repeater Association

President: John N8KAM

Vice President: Eric K8UH

Secretary: Dale WA8FRD



The Officers of the Wyandotte Amateur Repeater Association

President: John N8KAM

Vice President: Eric K8UH

Secretary: Dale WA8FRD

Treasurer: Ruth WB8AFO



The Officers of the Wyandotte Amateur Repeater Association

President: John N8KAM

Vice President: Eric K8UH

Secretary: Dale WA8FRD

Treasurer: Ruth WB8AFO

WY8DOT Trustee and Tech Committee Chairman: Stan K8SB